

# 2004 SEA RAY 460 SUNDANCER





LOA:	BEAM:	DRAFT:	POWER:	CABINS:	HEADS:
46'	14' 6"	3' 5"	2x Cummins 460 HP	1	1























NO TRESPASSING  
WE DON'T CALL 911  
THE PROMISE IS PROTECTION  
BY ELECTRONIC MONITORING

























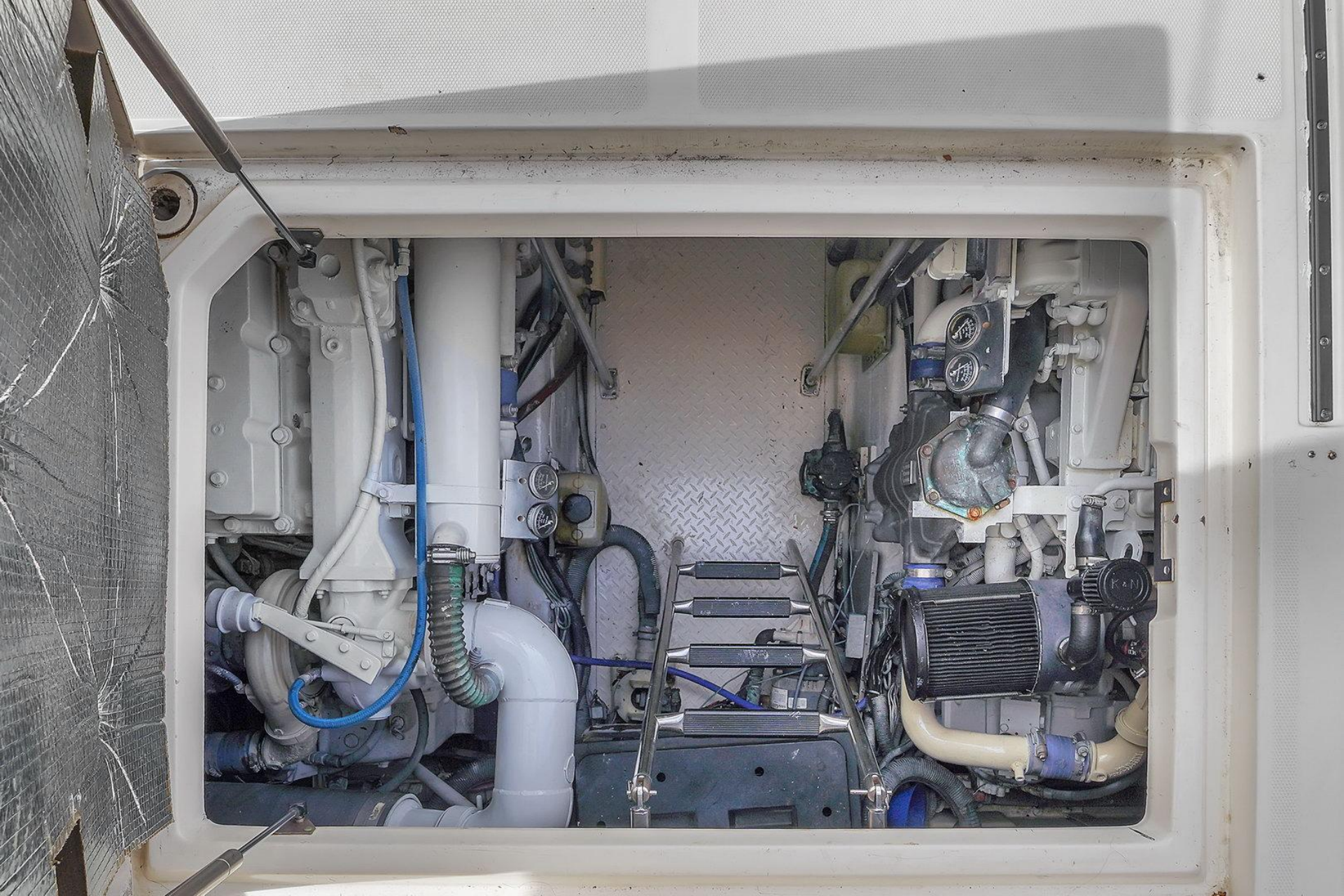


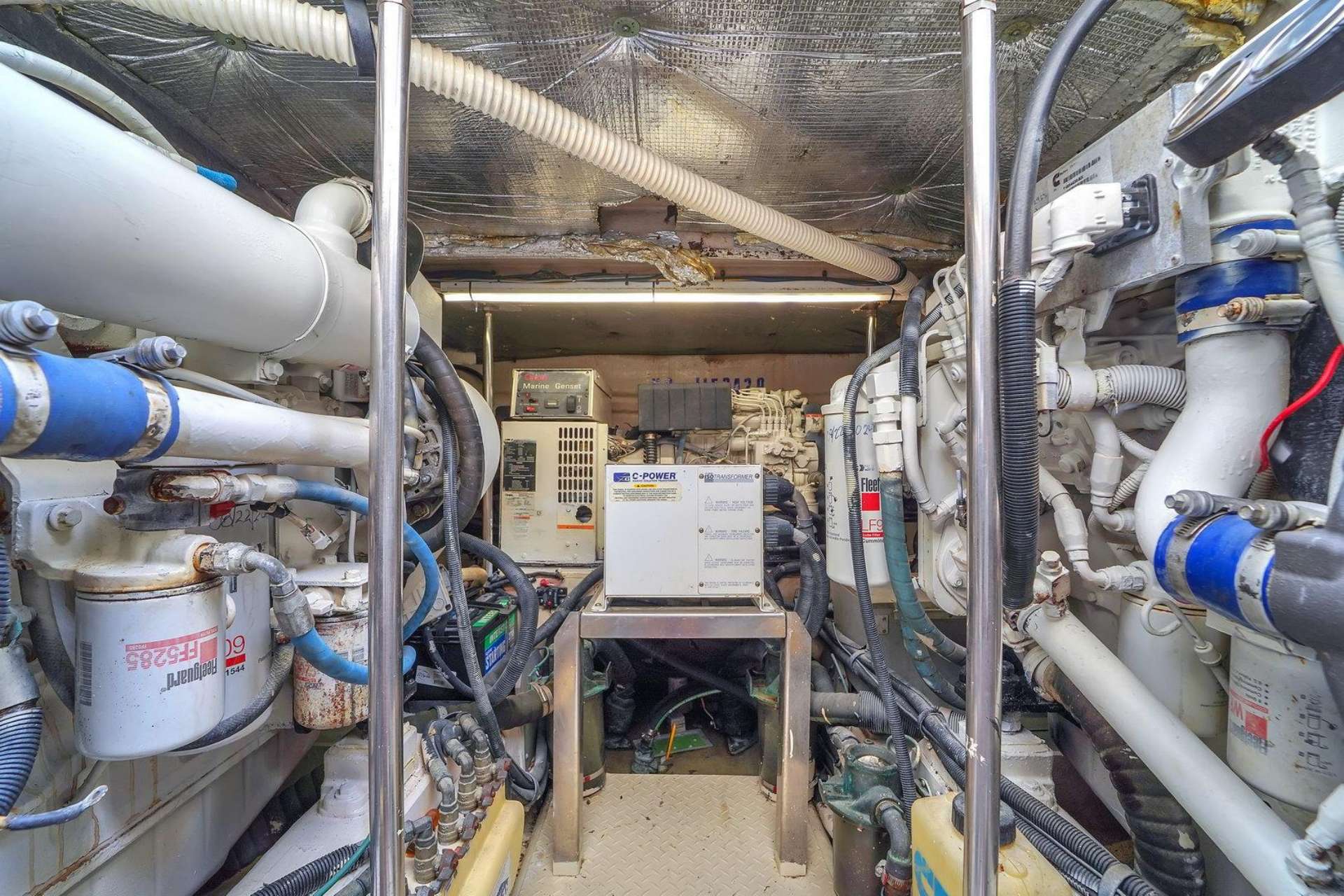












Marine Genset

**C-POWER** TRANSFORMER

WARNING: HIGH VOLTAGE  
DANGER: OPEN CIRCUIT  
DANGER: SHORT CIRCUIT  
DANGER: OVERLOAD

Fleetguard  
FF5285  
1544

Fleetguard  
FF5285

Fleetguard  
FF5285



**C-Power**  
Marine Genset

**C-Power**  
MARINE ISOLATION TRANSFORMER

**C-Power**  
MARINE ISOLATION TRANSFORMER

**12 kVA ISO TRANSFORMER**

**CAUTION**

THIS VESSEL IS EQUIPPED WITH SHORE LINE ISOLATION TRANSFORMERS. THE NEUTRAL AND GROUNDING CONDUCTORS ARE CONNECTED ON A COMMON NEUTRAL/GROUNDING BUS AT THE MAIN DISTRIBUTION PANEL. TO MAINTAIN ELECTRICAL SYSTEM INTEGRITY, THE NEUTRAL AND GROUNDING CONDUCTORS SHALL BE KEPT ISOLATED AT ALL OTHER LOCATIONS ONBOARD THE VESSEL.

**WARNING - HIGH VOLTAGE**  
TO AVOID SERIOUS INJURY OR DEATH FROM HIGH VOLTAGE ELECTRICAL SHOCK, DISCONNECT AC SHORE POWER BEFORE OPENING PANEL.

**WARNING - FIRE HAZARD**  
PRIMARY AND SECONDARY OVERCURRENT PROTECTION AND CONDUCTOR SIZES MUST BE IN ACCORDANCE WITH MANUFACTURER'S INSTALLATION INSTRUCTIONS.

**WARNING - ON BOARD AND IN WATER SHOCK HAZARD**  
TRANSFORMER MUST BE CONNECTED IN ACCORDANCE WITH MANUFACTURER'S INSTALLATION INSTRUCTIONS.

THIS DEVICE IS GUNION PROTECTED IN ACCORDANCE WITH U.S. COAST GUARD REQUIREMENTS UNDER 33 CFR 184.05.

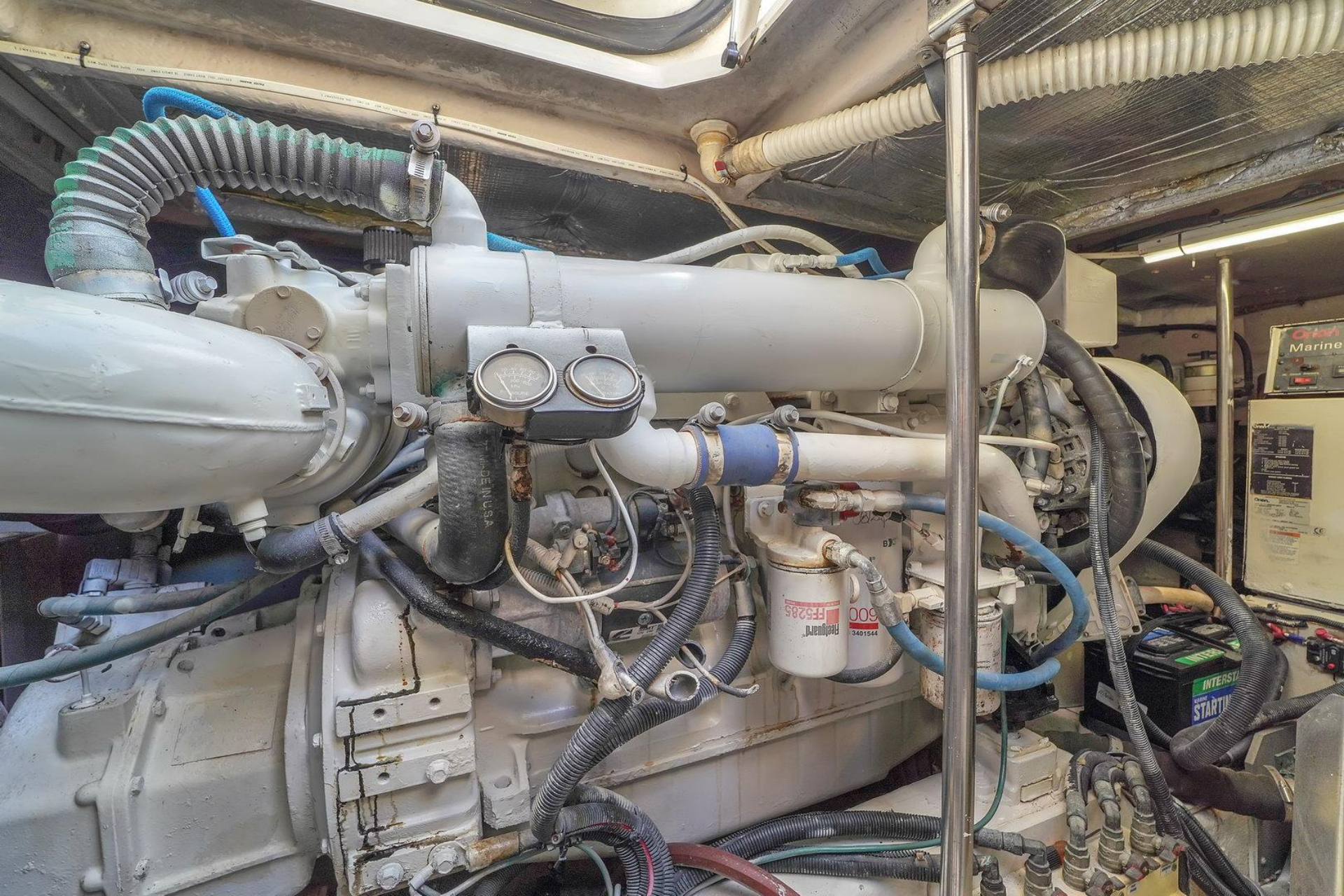
FLUORESCENT LIGHT FIXTURE

024

CEM APPROVED

INTERSTATE BATTERY





**yachtcreators.com**



@yachtcreators

Fort Lauderdale • Miami Beach | [hello@yachtcreators.com](mailto:hello@yachtcreators.com)